

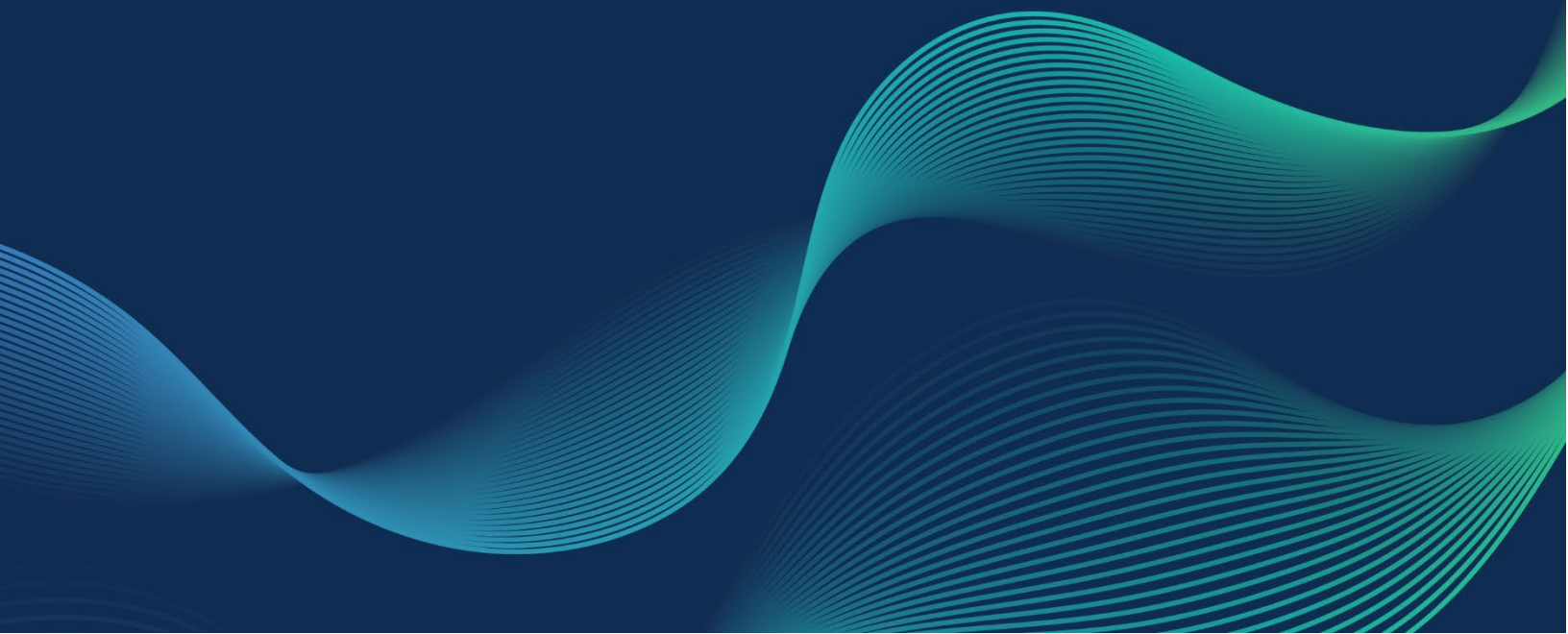


2025 FALL LAUNCH

Accelerated Producer Success and Relationship-driven Efficiency

The Fall 2025 Launch delivers a powerful set of updates designed to help insurers, brokers, and service providers grow profitably in today's evolving risk landscape. This launch highlights Zywave's ongoing commitment to making the insurance industry more connected, efficient, and successful.

Enhancements span multiple products with a focus on elevating human performance, creating a stronger ecosystem advantage through seamless integrations, and delivering unmatched data and content to drive smarter decisions.



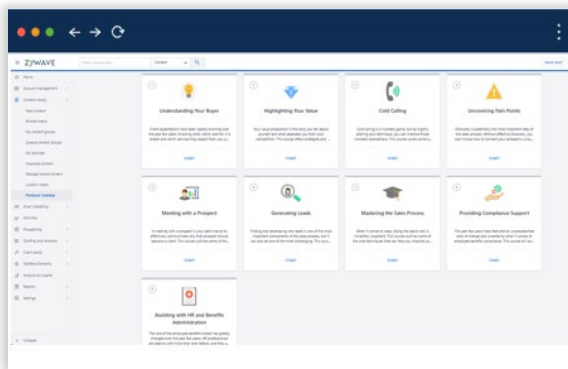
Unrivaled Data and Content

New features are designed to accelerate organic growth by improving prospecting research and outreach strategies, while enhancing both organizational acumen and brand identity.

CONTENT CLOUD – PRODUCER VALIDATION PROGRAM

Agency | Personal Lines, Employee Benefits, Commercial Lines

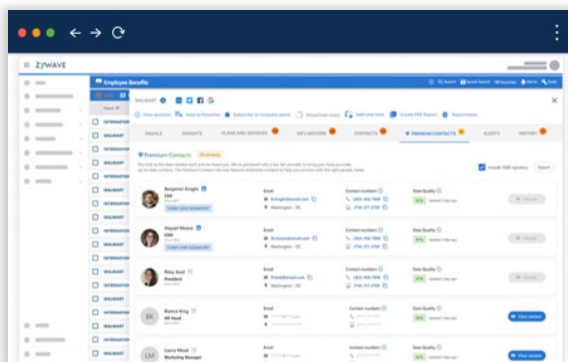
A dedicated suite of resources within Content Cloud includes materials designed to help insurance professionals through their first year and beyond. Interested in learning more about Content Cloud? [Go here.](#)



MIEDGE - COMPANY CONTACT DATA ENHANCEMENT (MIEDGE WEB APP)

Agency | Personal Lines, Employee Benefits, Commercial Lines

Enhanced contact data – including LinkedIn profile and mobile phone information - helps brokers find and connect with 13 million key representatives of companies across the United States, allowing them to initiate prospecting conversations with confidence. See more about miEdge [here.](#)



MIEDGE - ENHANCE BROKER RECORD WITH REVENUE, PREMIUM, EMPLOYEE, AND LOCATION-SPECIFIC BOOK OF BUSINESS DETAILS)

Insurer, Service Provider | Employee Benefits

New details within the dashboard for the Broker Search experience – including broker revenue, written premium, and location-specific client details – allow insurance carriers and service providers to assess strategic partnership opportunities more effectively. Discover what miEdge can do [here](#).

Ecosystem Advantage

Zywave is expanding its digital distribution capabilities to drive premium growth opportunities for carriers and enhancing quoting efficiency for brokers — helping both gain an edge in a competitive market.

DISTRIBUTION EXPANSION

Agency, Insurer, Service Provider | Personal Lines, Employee Benefits, Commercial Lines

Added eleven carriers across 17 states within Auto and Home quoting; added a Medical Level Funded carrier to 20 states, a Vision and Dental carrier to 47 states; and within Commercial and E&S, added 4 carriers across 3 lines of coverage. See the carrier lists for [Employee Benefits](#), [Personal Lines](#), [Commercial Lines Excess & Surplus](#) and [Cyber](#) for the complete list of carriers on each platform. Insurers, interested in learning how to distribute on Zywave? [Go here](#).

PERSONAL LINES QUOTING API FLOOD CARRIER EXPANSION

Agency, Insurer, Service Provider | Personal Lines, Employee Benefits, Commercial Lines

Additional Flood carriers have been added to the Personal Lines Quoting API to allow quoting directly into agent's workflows. With expanded carrier access, agencies get faster responses, fewer manual steps, and seamless integration—while carriers gain smarter distribution and access to 8,000+ active agents. Find out more about Personal Lines Quoting API [here](#).

CPQ BENEFITS EXPANDED EMPLOYEE NAVIGATOR INTEGRATION

Agency | Employee Benefits

Expanded the Employee Navigator integration with Benefits CPQ to streamline quoting and enrollment. Users can now import census info *from Employee Navigator* into the quote, and push sold dental and vision plan data along with medical plans, all without extra activation steps. These updates save time, reduce errors, and make the quoting experience more scalable and efficient. Learn more about the [Employee Navigator integration here](#), [how to use it](#), and [what data is included here](#). Find out more about [CPQ Benefits here](#).

Choose coverages for import file

Choose the coverage types to create Enrollment booklet import file.

Only plan types with plans marked sold can be downloaded.

- ☒ Medical
- ☒ Dental
- ☒ Vision

Cancel Export

Import census

Upload census

[Browse](#) Select or drag files here

Or import census from Employee Navigator.

Cancel Go

CPQ BENEFITS KEY PROPOSAL UPDATES

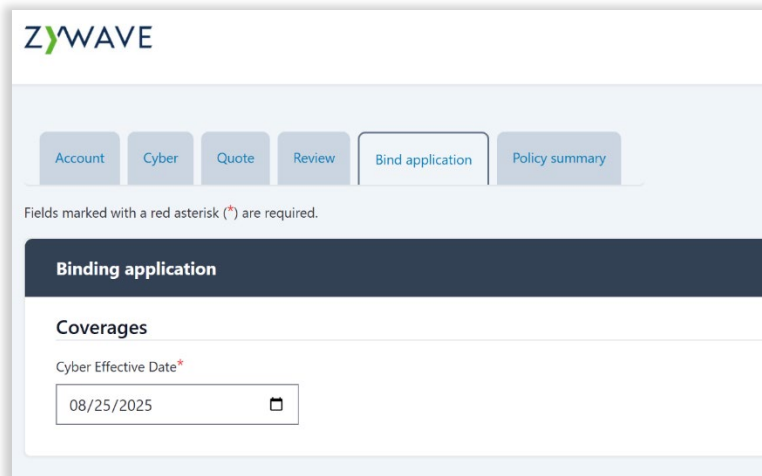
Agency | Employee Benefits

Add plans from carriers that are not part of your current inventory, allowing for a broader range of options tailored to fit your needs. Within the proposals in Excel, formulas are now included to allow brokers to manage employee selections and automatically recalculate to provide accurate financial insights without manual adjustments or re-running proposals. Discover what CPQ Benefits is all about [here](#).

CYBER QUOTING BIND IN APPLICATION

Agency | Commercial Lines

Bind directly within Cyber Quoting—no carrier site visits, no extra steps. Quote, bind, and access policy documents all in one tool for faster workflows, greater accuracy, and easier training. See the [full carrier list here](#). Learn more about [Cyber Quoting here](#).



The screenshot shows the ZYWAVE user interface for the 'Binding application' step. At the top, the ZYWAVE logo is visible. Below it is a navigation bar with tabs: Account, Cyber, Quote, Review, Bind application (which is the active tab), and Policy summary. A note states: 'Fields marked with a red asterisk (*) are required.' The main section is titled 'Binding application' and contains a 'Coverages' subsection. Under 'Coverages', there is a field for 'Cyber Effective Date*' with a calendar icon. The date '08/25/2025' is entered in the field.

CLARIONDOOR - ISO / AAIS BASE CONTENT - COMMON DEVELOPMENT – SET-UP TRANSACTIONS IN BASE PORTAL

Agency, Insurer, Service Provider | Personal Lines, Employee Benefits, Commercial Lines

Our Base Content Transaction Set-up now includes built-in support for common policy transactions including cancellation and reinstatement reasons. This provides a standardized framework for handling transactions, making it easier for users to accelerate implementation, improve operational accuracy and reduce customization needs across client environments. Head to [our website](#) to learn more about ClarionDoor.

CLARIONDOOR - ISO BASE CONTENT - COMMERCIAL PACKAGE MODIFICATION SUPPORT

Agency, Insurer, Service Provider | Personal Lines, Employee Benefits, Commercial Lines

We've added support for ISO commercial Package Modifications to the ClarionDoor base system, giving users more control and consistency when applying rating adjustments across policies. These include policy-level selection of package modifications, override flexibility at the occurrence level, and integrated RMF calculations that automatically include the applicable package modification.

Get more information on ClarionDoor [here](#).

Elevating Human Performance

Zywave's recent innovation significantly enhances the digital experience for both customers and their clients, streamlining workflows and improving data management.

BROKERAGEBUILDER – CORE PLATFORM: POLICIES - PERMISSIONS AND WORKFLOW ENHANCEMENTS FOR SBC EXTRACTION

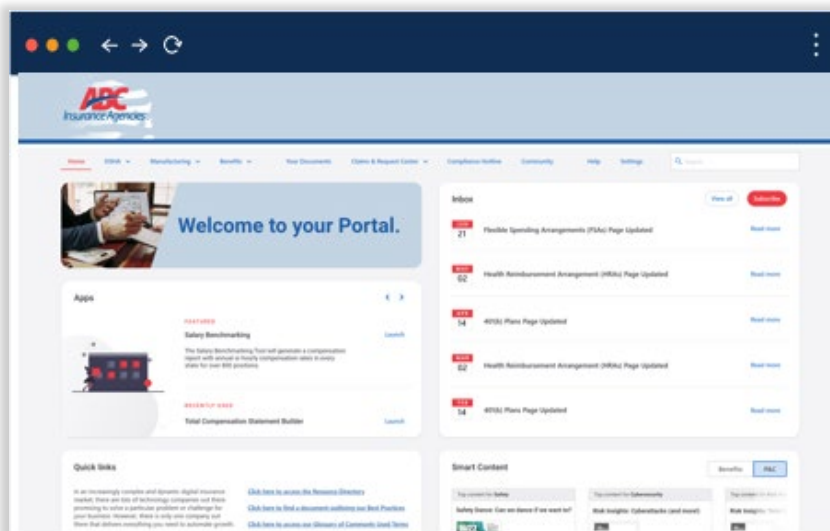
Agency, Insurer, Service Provider | Personal Lines, Employee Benefits, Commercial Lines

Sync policy data and toggle seamlessly between BrokerageBuilder and Zywave Core with our new one-way policy sync and Summary of Benefits and Coverage workflows. Streamlined fields and clear guidance help your team reduce errors, improve data quality, and work confidently. Just in time for busy season. See what BrokerageBuilder is all about [here](#).

PARTNER PLATFORM – MOVE TO WEB - TOOLS MENU, DIRECT ADVANCE & DAILY PROCESSING

Agency, Insurer, Service Provider | Personal Lines, Employee Benefits, Commercial Lines

With this launch, more Partner Platform tools like the Tools menu, Direct Advance, Daily Processing, invoicing, ACORD forms, and coverage templates are moving to the web! Users will enjoy a simpler interface, anywhere access, faster updates, and streamlined workflows, making critical agency tools easier and more efficient than ever. Get more info on Partner Platform [here](#).



CONTENT & CLIENT CLOUDS – PORTAL CUSTOMIZATION & FLEXIBLE BRANDING

Agency, Insurer, Service Provider | Personal Lines, Employee Benefits, Commercial Lines

Updates to client portal settings allow users to add images, select color schemes that fit their brand, and pin items for quick access. An improved navigation menu and content folder system make it easier for end-users to find and use portal resources. Additionally, refreshed branding capabilities give users nuance when managing their organization's logo and name settings on content assets. Explore what [Client](#) and [Content Clouds](#) can do for you.

ZYWAVE PLATFORM – CORE PLATFORM - POLICIES: POLICY SETTINGS AND ADMINISTRATION ENHANCEMENTS

Agency, Insurer, Service Provider | Personal Lines, Employee Benefits, Commercial Lines

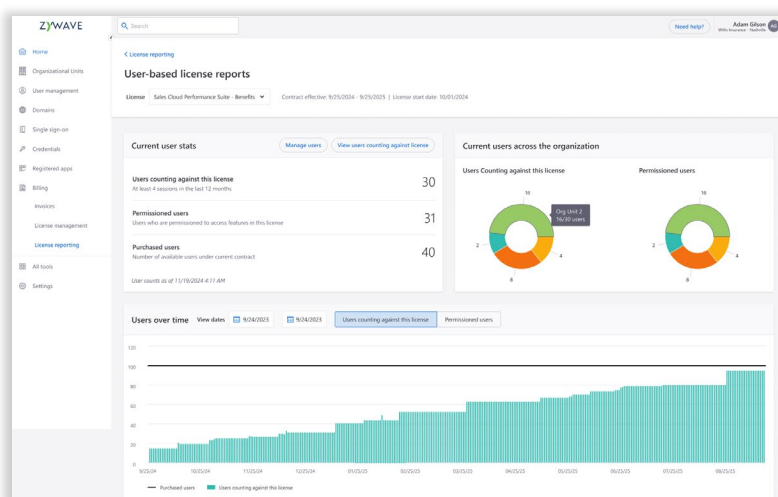
Giving system administrators control to configure fees, manage payees, and set which policy types users can access.

Secure & Modern

ZYWAVE PLATFORM – MODERN PRICING - ENTERPRISE REPORTING (MULTI-TENANT)

Agency, Insurer, Service Provider | Personal Lines, Employee Benefits, Commercial Lines

Introducing in-product enterprise reporting, giving you direct visibility into user-based license reporting, usage data, and organizational hierarchies. With clear visuals and roll-up views across parent/child or multi-tenant structures, you can easily track licenses, monitor adoption, and better understand your organization's usage.



Want to learn more about these new features and releases?

Watch the [2025 Fall Launch webinar](#) or visit zywave.com.

ZYWAVE